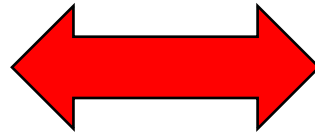


are you ready
for the
revolution?

Allen H. Kupetz
April 5, 2005

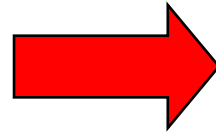
Three Revolutions in Your Lifetime

Wires



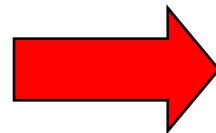
Wireless

**Powerful
Infrastructure**



**Powerful
Devices**

**Star
Architectures**



**Peer-to-Peer
Networks**

Wires vs. Wireless

The Negroponte Shift



wireline to wireless



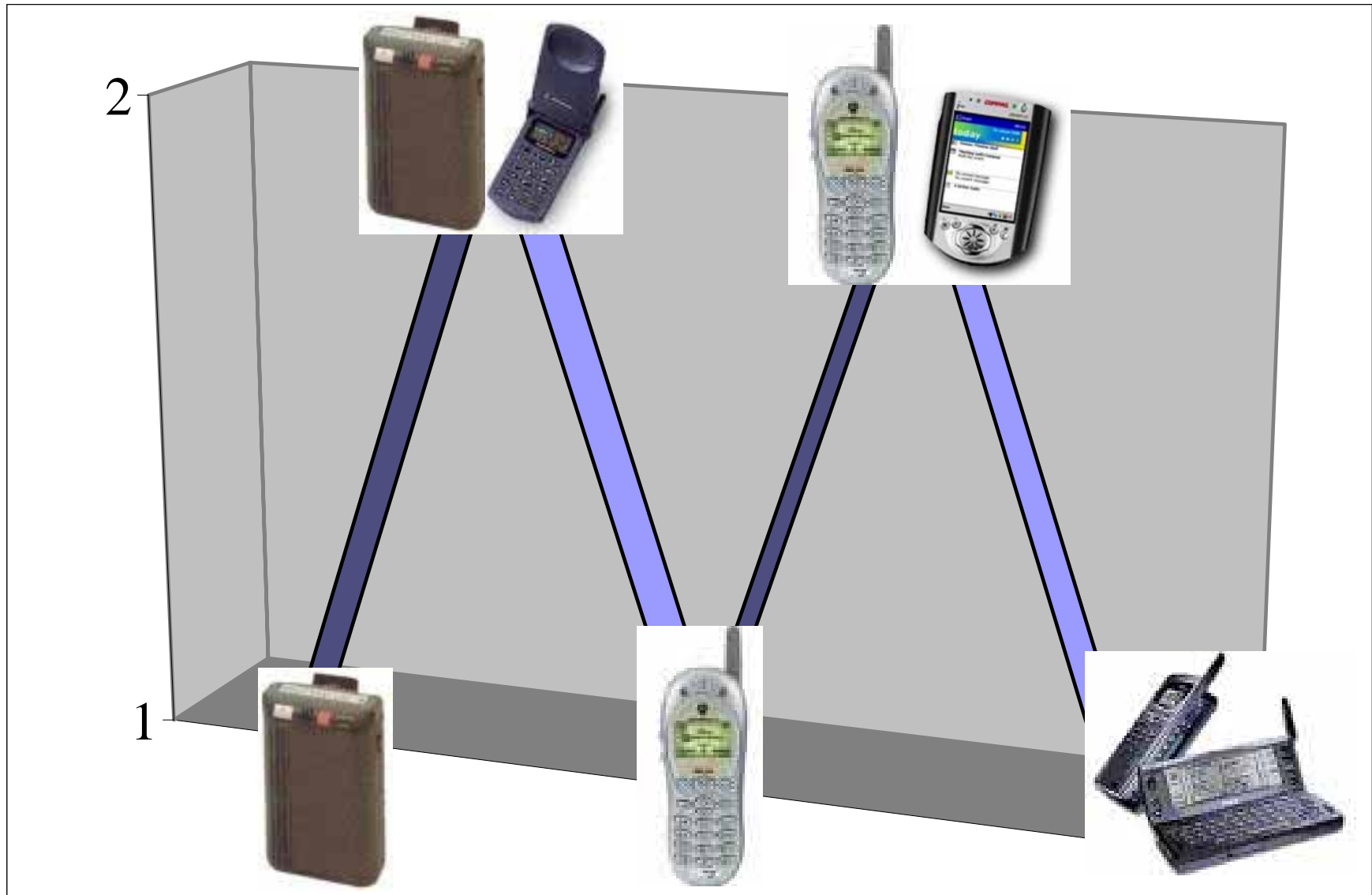
wireless to wireline



“Being Wireless,” *Wired* (Oct 2002)
<http://www.wired.com/wired/archive/10.10/wireless.html?pg=1>

Infrastructure vs. Devices

Convergence - Phase 1



Convergence - Phase 2



Available TODAY in Korea



CCTV

Credit Card



Traffic

Movies



Banking

Location



Japan's "Cashless Society"

THE CMODE VENDING MACHINE



- button to select soft drink
- white LEDs, light up when cmode-machine communicates via data-link
- full color LCD display (displays user interface menus, soft buttons, movies, messages etc.)
- bank notes entry
- displays accepted cash and messages
- coin entry and return lever
- "cmode button", to activate cmode functions
- scanner to read c-tickets and cmode point pass from user's mobile phone
- key pad (0,1,2,3,4,5,6,7,8,9,YES, NO)
- coin return
- printer port, delivers tickets, maps, coupons...
- soft drinks delivered here!



“By 2010, only 1/5 of DoCoMo’s users will be human beings. The rest will be cars, bicycles, computers, ships, vending machines and home appliances.”

(January 2004)

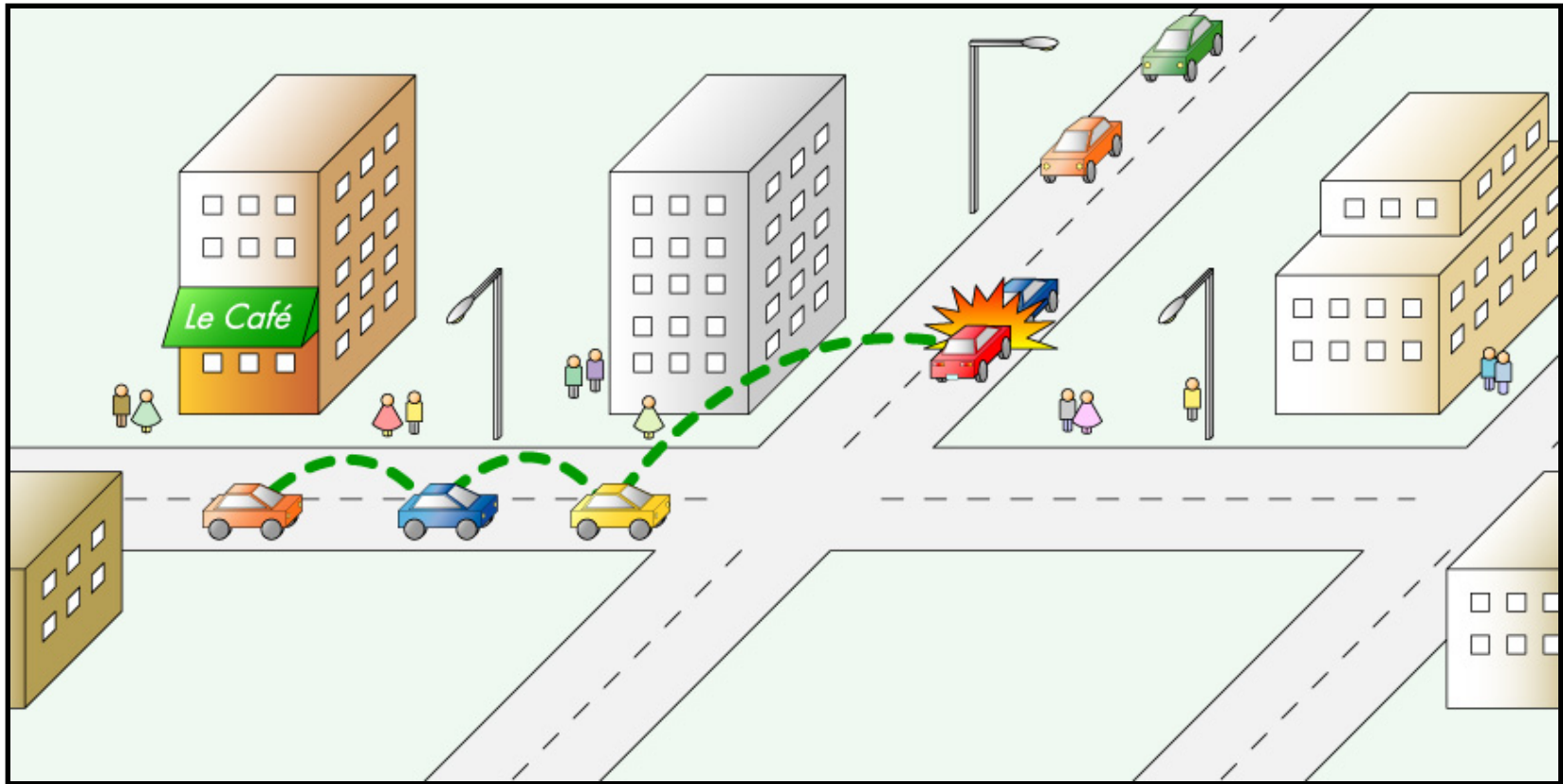
Dr. Keiji Tachikawa
CEO, NTT DoCoMo

“Top 25 Most Influential Global Executive”
(Time/CNN)



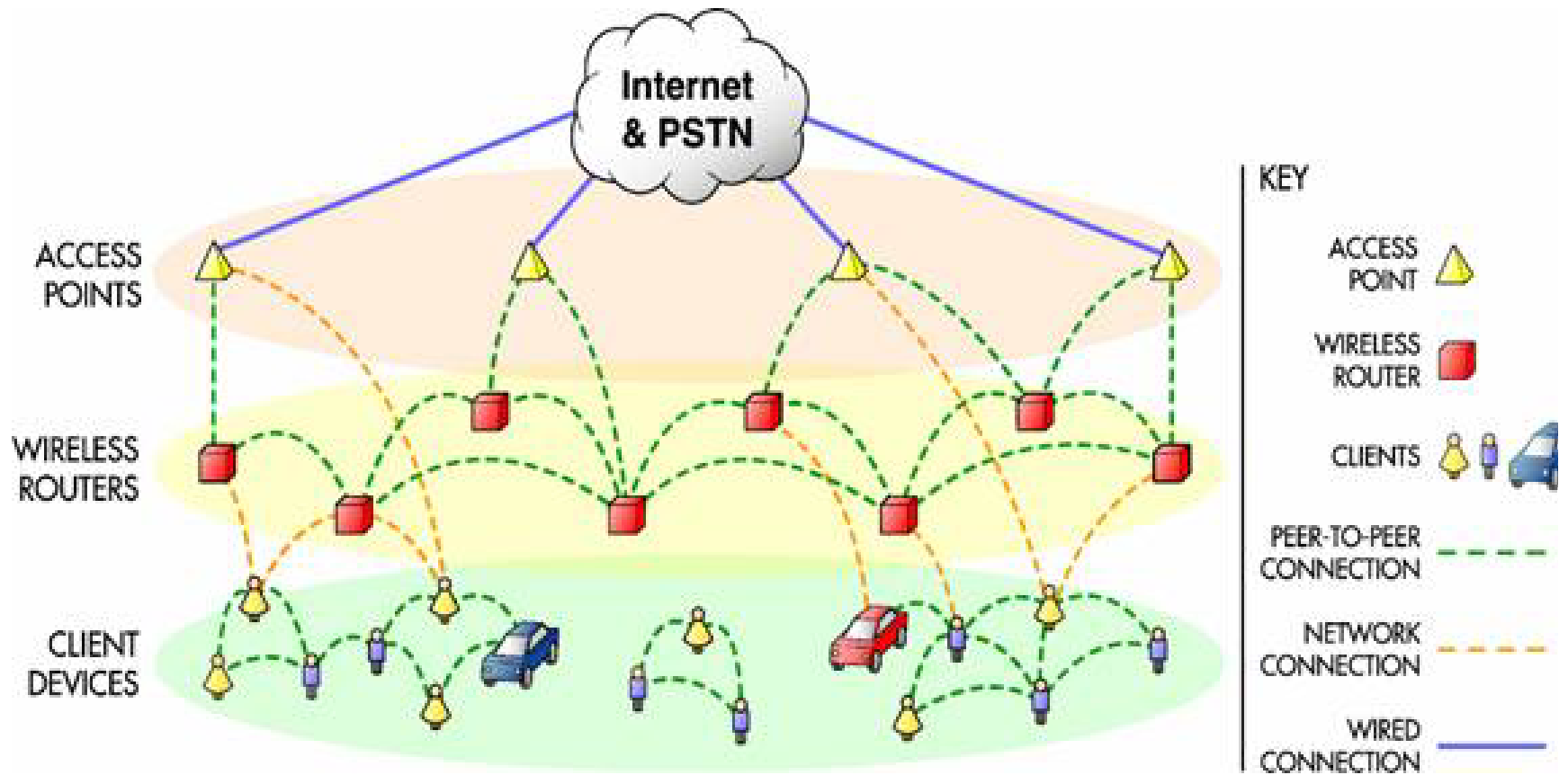
The world's leading mobile communications company with more than 47 million customers.

Machine-to-Machine

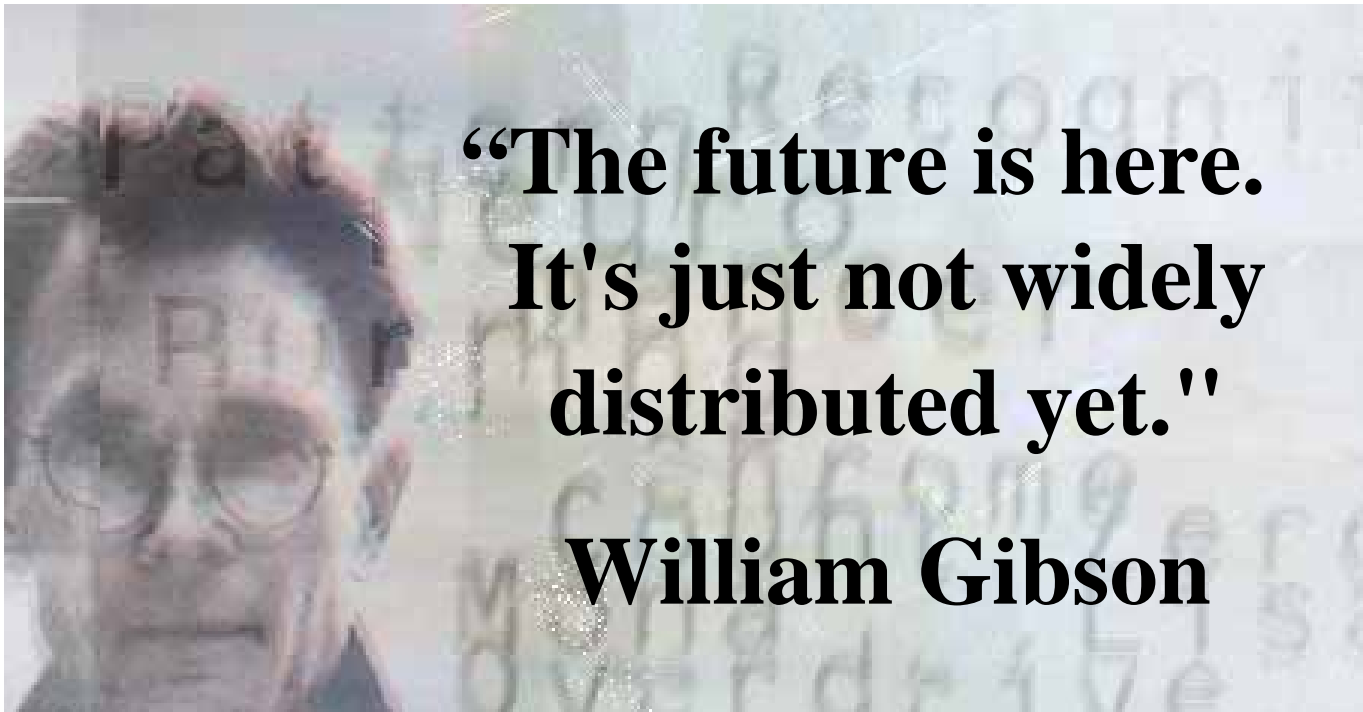


Star vs. Peer-to-Peer

Peer-to-Peer



Question and Answer



**“The Mayans lost to the Aztecs, the Romans lost to the Barbarians, and the French lost to the Vietnamese.
In each case the losers had superior technology,
but the victors had more troops.”**

akupetz@kpartnerz.com

